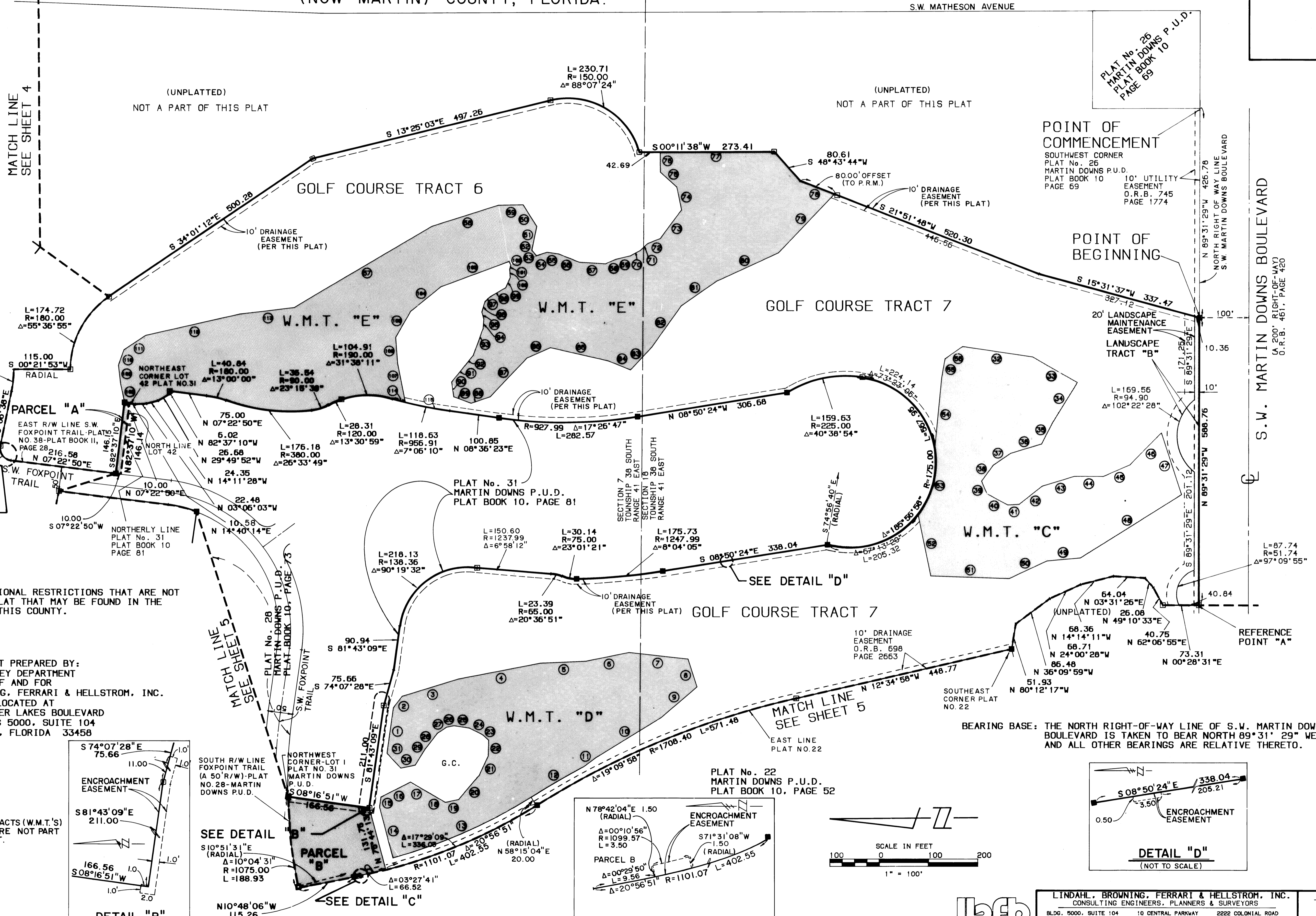
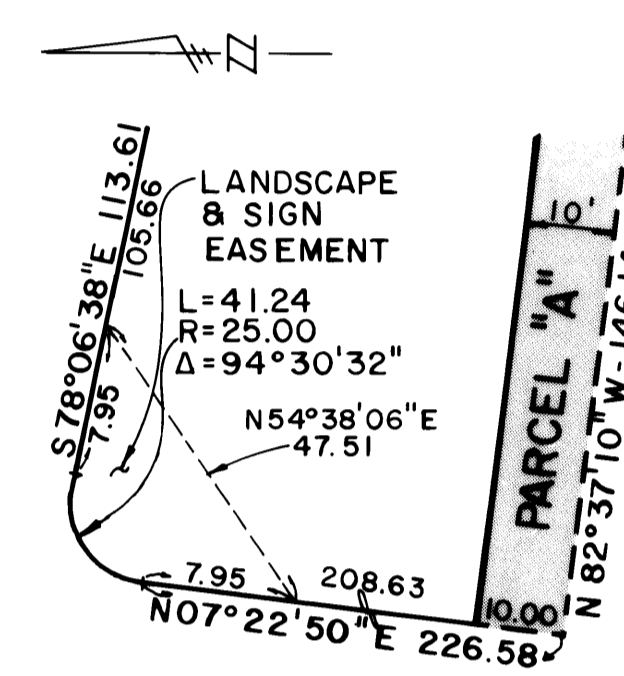
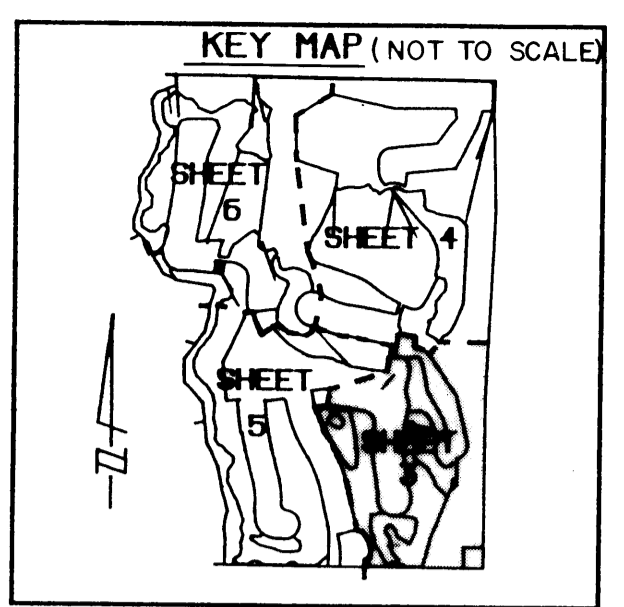


A PLAT OF MONARCH GOLF COURSE

BEING PLAT No. 64 - MARTIN DOWNS, P.U.D.
LYING IN SECTIONS 12 & 13, TOWNSHIP 38 SOUTH, RANGE 40 EAST
AND SECTIONS 7 & 18, TOWNSHIP 38 SOUTH, RANGE 41 EAST
MARTIN COUNTY, FLORIDA; AND BEING A REPLAT OF A
PORTION OF TRACTS 1 & 16, OF THE PLAT OF PALM CITY
FARMS AS RECORDED IN PLAT BOOK 6, PAGE 42, PALM BEACH
(NOW MARTIN) COUNTY, FLORIDA.

- LEGEND**
- = FOUND 4"x4" CONCRETE MONUMENT (NO NUMBER)
 - = SET 4"x4" CONCRETE MONUMENT WITH DISC "LS 4169 PRM"
 - = FOUND 4"x4" CONCRETE MONUMENT WITH DISC "LB 959 PRM"
 - PRM = PERMANENT REFERENCE MONUMENT
 - W.M.T. = WATER MANAGEMENT TRACT
 - ① = CENTERLINE
 - G.C. = GOLF COURSE
 - F.P.L. = FLORIDA POWER & LIGHT
 - O.R.B. = OFFICIAL RECORD BOOK
 - R/W = RIGHT OF WAY

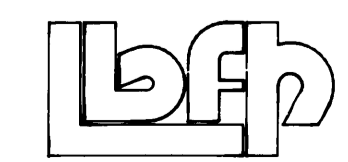
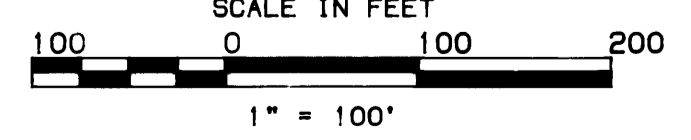
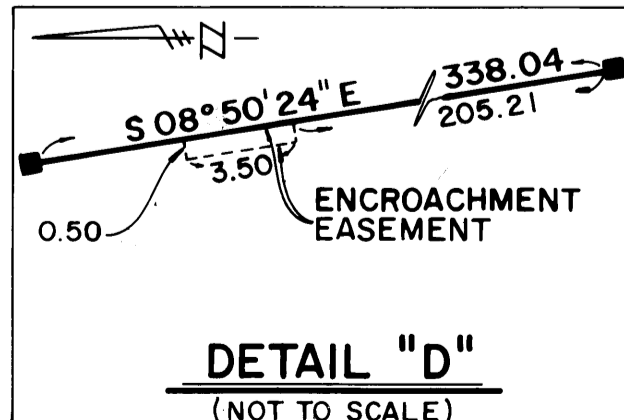
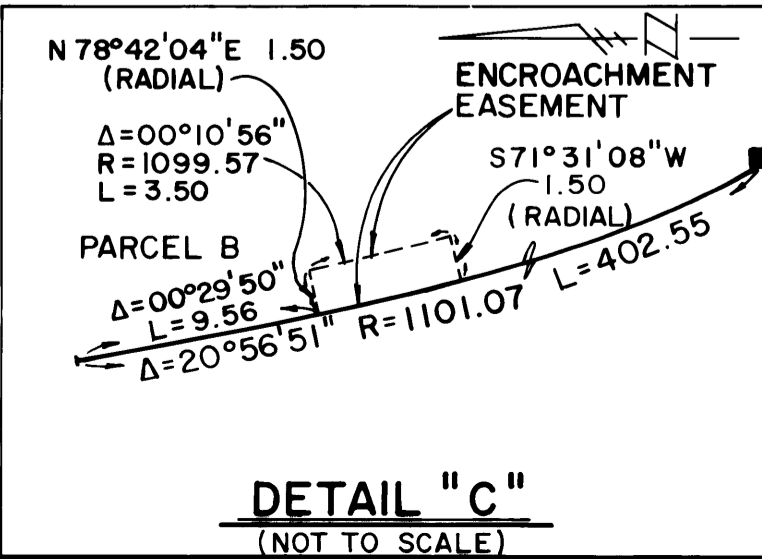
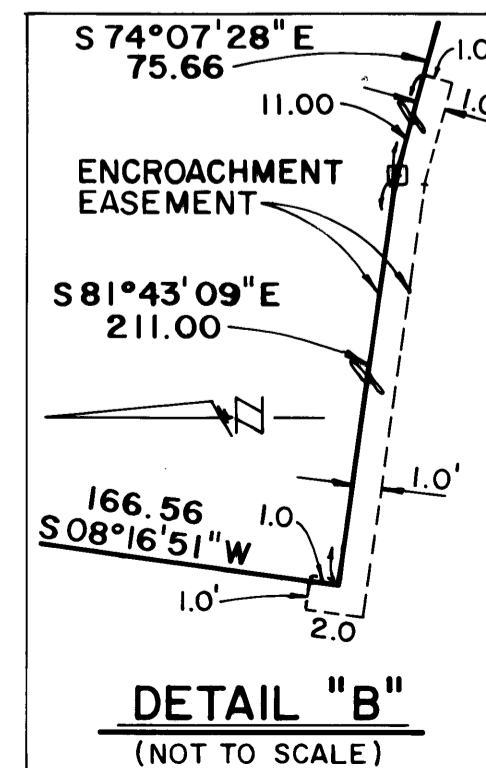


DETAIL "A"
(NOT TO SCALE)

NOTICE: THERE MAY BE ADDITIONAL RESTRICTIONS THAT ARE NOT RECORDED ON THIS PLAT THAT MAY BE FOUND IN THE PUBLIC RECORDS OF THIS COUNTY.

THIS PLAT PREPARED BY:
THE SURVEY DEPARTMENT
OF AND FOR
LINDAHL, BROWNING, FERRARI & HELLSTROM, INC.
LOCATED AT
210 JUPITER LAKES BOULEVARD
BUILDING 5000, SUITE 104
JUPITER, FLORIDA 33458

NOTE: THE WATER MANAGEMENT TRACTS (W.M.T.'S) AS SHOWN ON THIS PLAT ARE NOT PART OF THE GOLF COURSE TRACT.



LINDAHL, BROWNING, FERRARI & HELLSTROM, INC.
CONSULTING ENGINEERS, PLANNERS & SURVEYORS

BLDG. 5000, SUITE 104 210 JUPITER LAKES BLVD. JUPITER, FL 33458 407-746-9248	10 CENTRAL PARKWAY SUITE 420 STUART, FL 34987 407-586-3883	2222 COLONIAL ROAD SUITE 201 FT. PIERCE, FL 34909 407-461-5190
---	---	---